



**WARSAW  
MASTERPLAN**

by  
**MARQUES & JORDY**  
LONDON

**SITE LOCATION**



MURANÓW

**OLD TOWN**

**PLOT B**

**PLOT A**

Teatr Wielki - Polish National Opera

Presidential Palace, Warsaw

Biblioteka Uniwersytecka w Warszawie

Teatr Capitol

Tomb of the Unknown Soldier

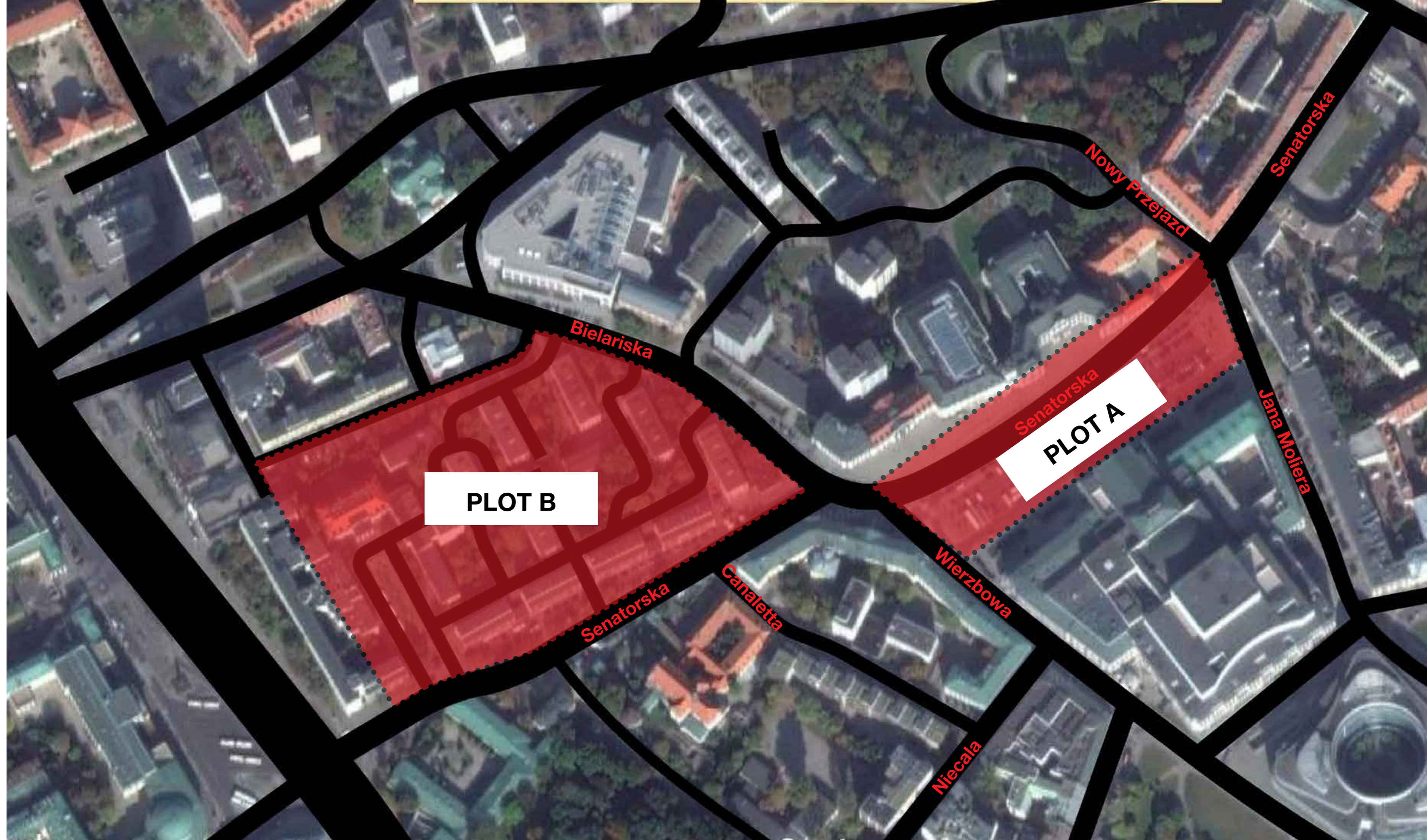
University of Warsaw

Zachęta - National Gallery of Art

Hala Mirowska



SITE LOCATION





SITE LOCATION BEFORE THE WAR



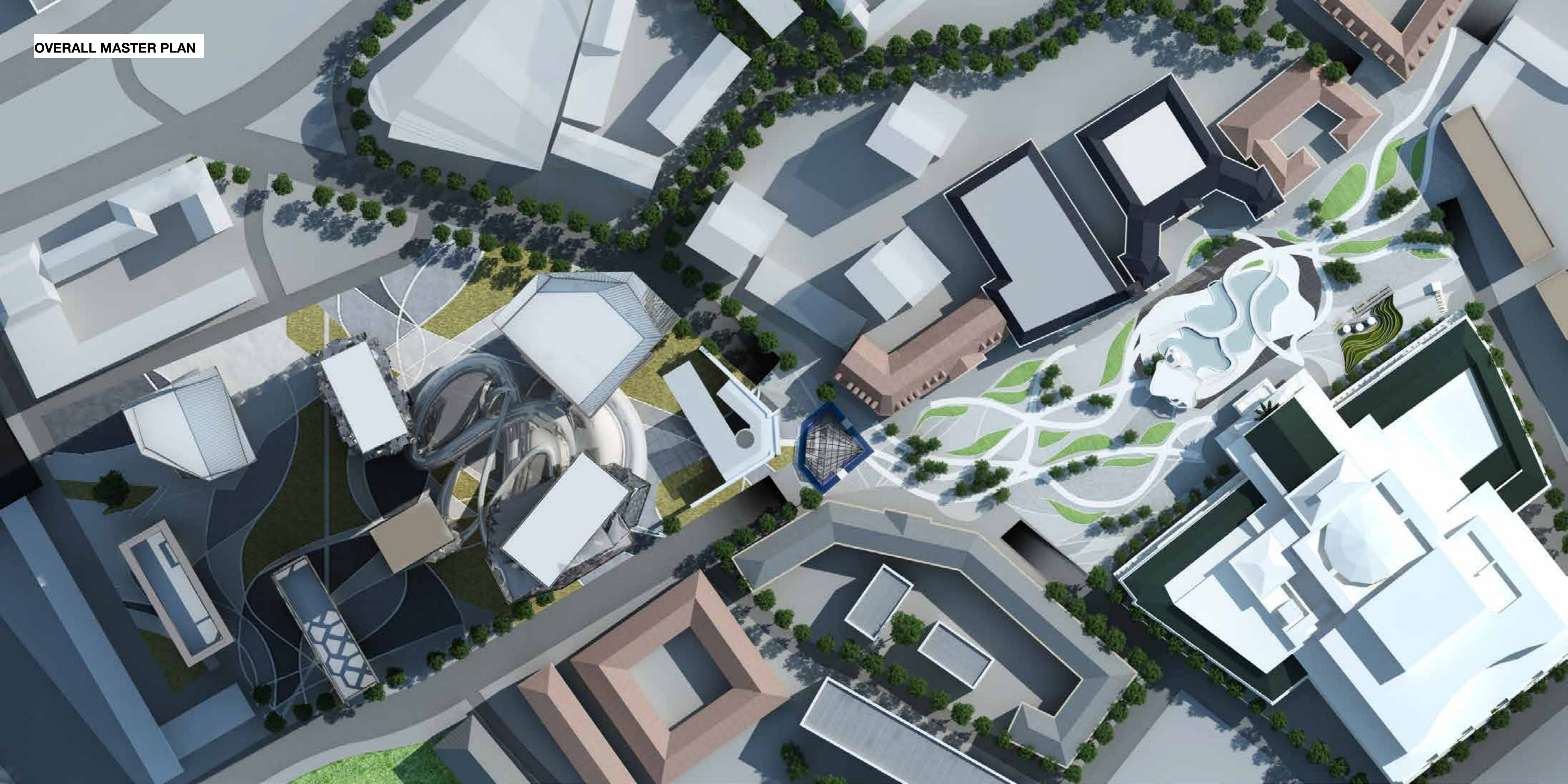


CURRENT SITE LOCATION

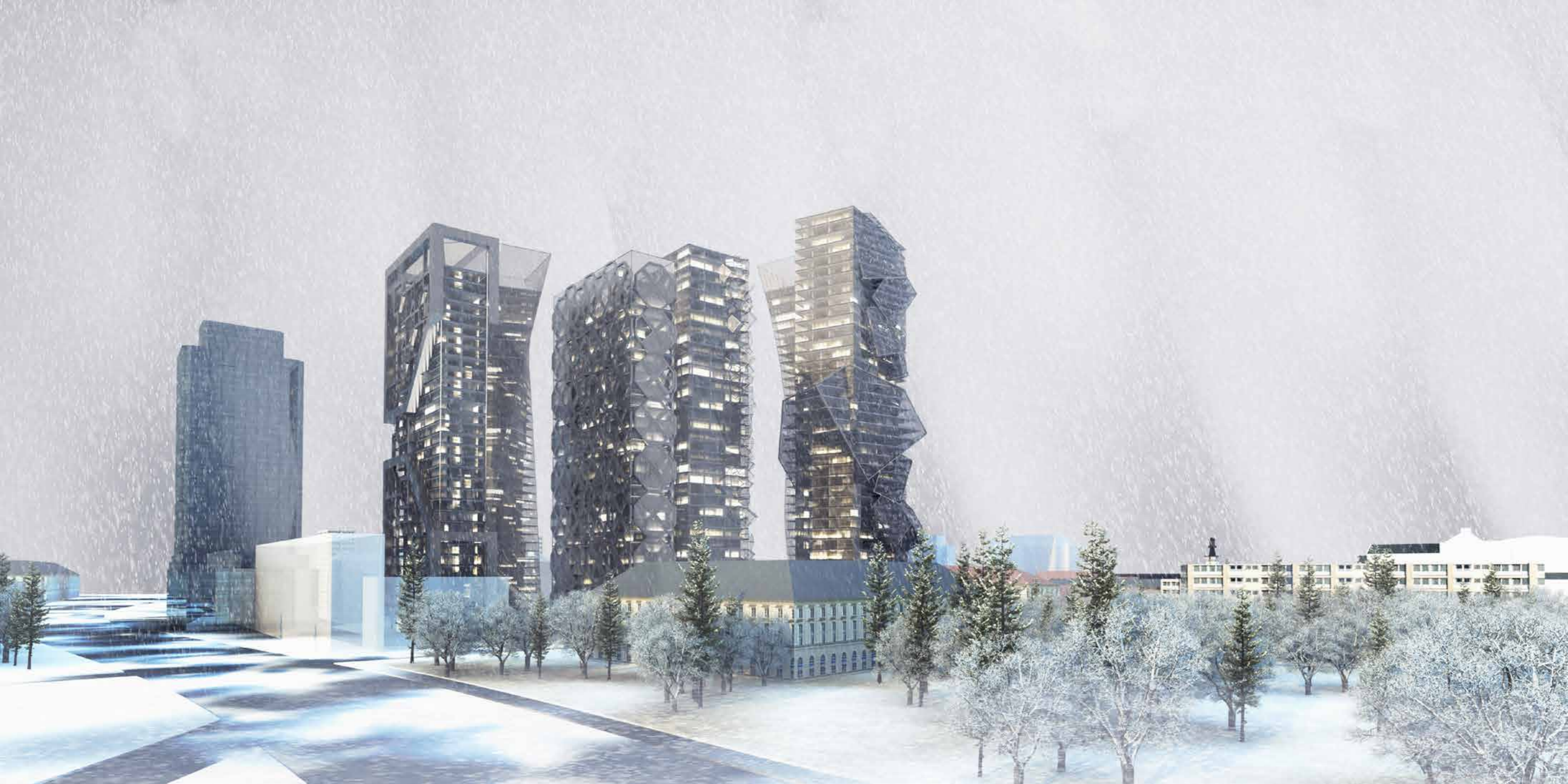




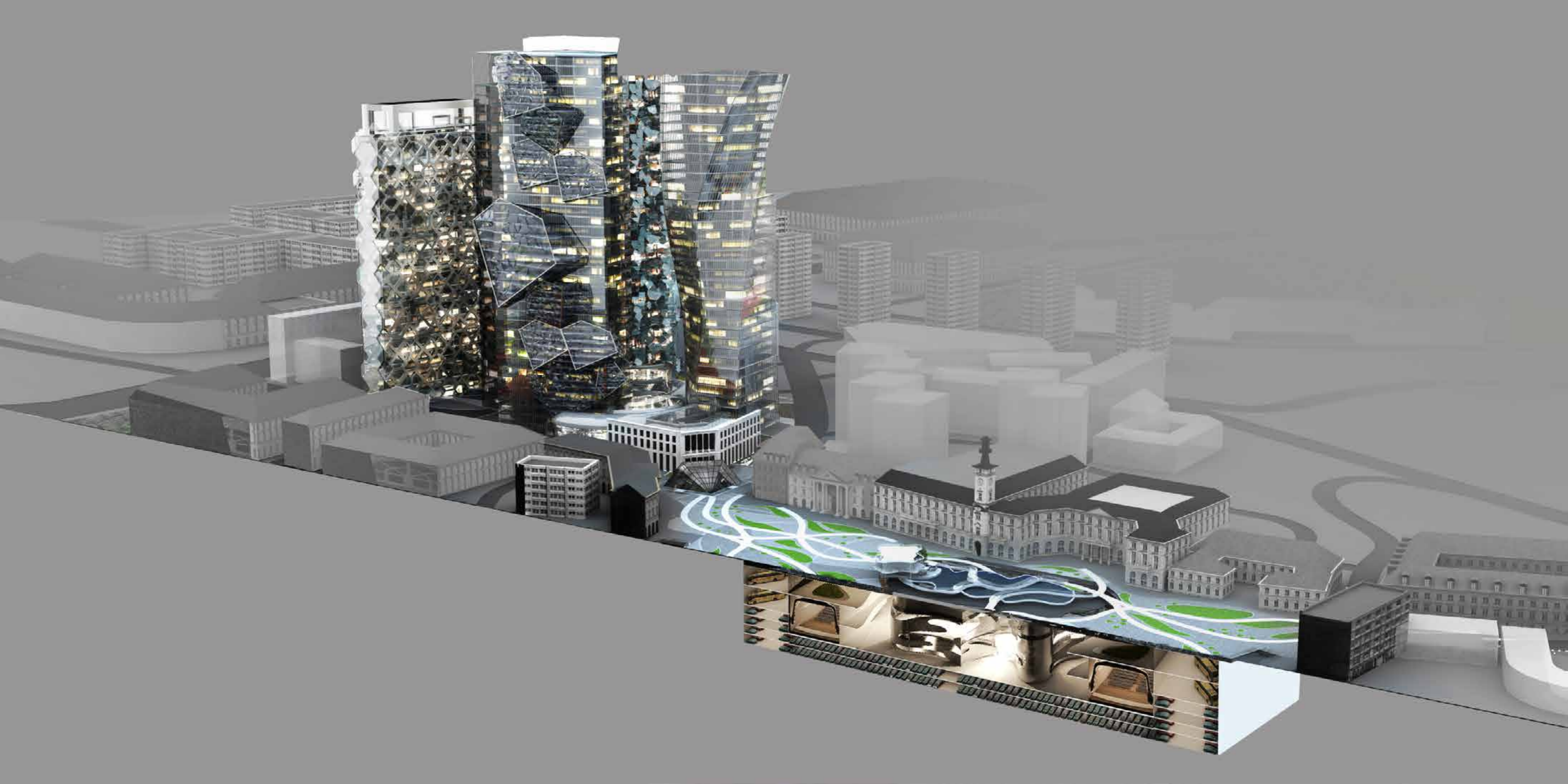
OVERALL MASTER PLAN



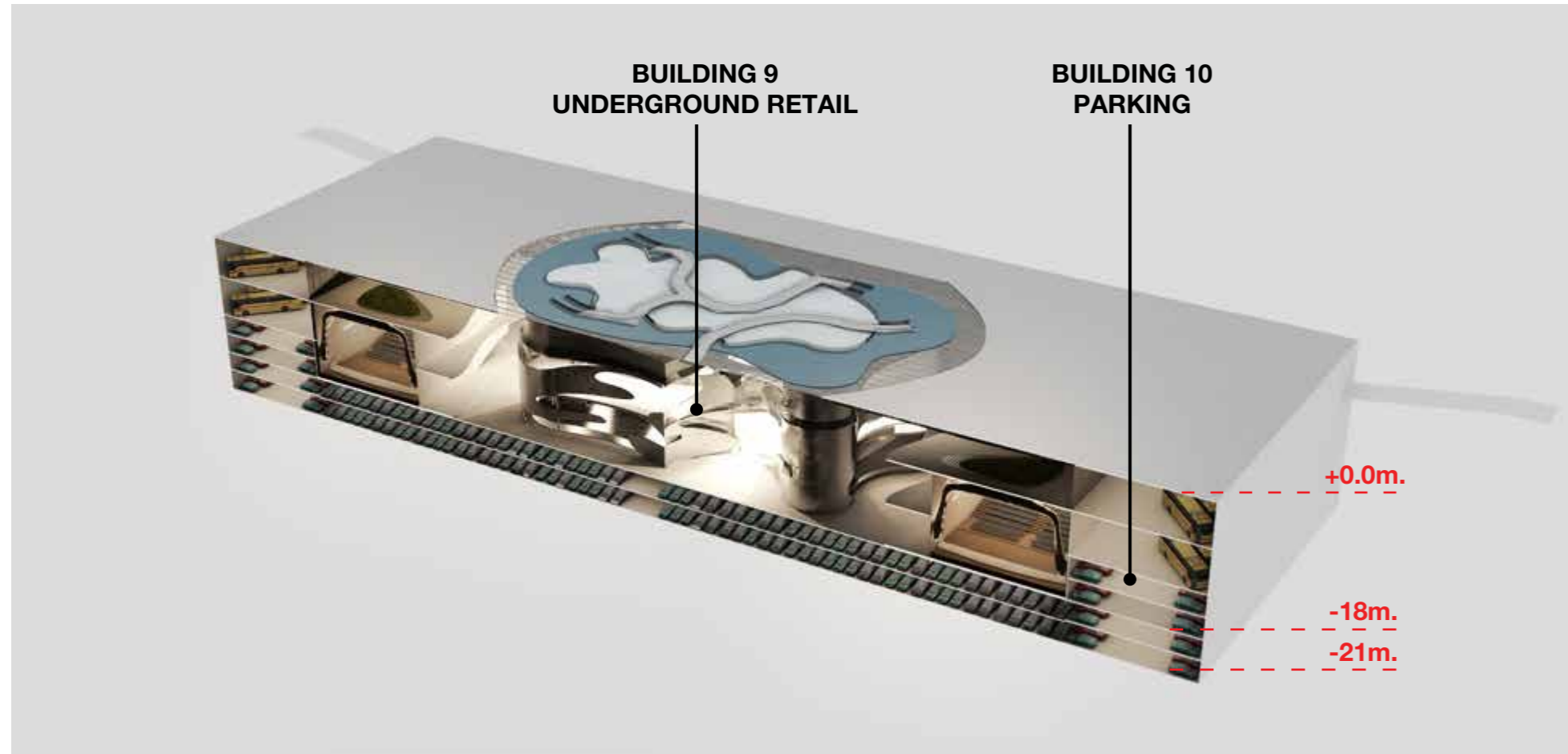












PLOT A SITE AREA		13,070		
BUILDING	AREA per Floor(m2)	AREA per Building(m <sup>2</sup> )	FLOOR per Building	BUILDING Height (m.)
BUILDING 9 UNDERGROUND RETAIL	5,256	15,768	3	18
BUILDING 10 PARKING	6,814	47,698	7	21
TOTAL NUMBER OF CARS	1,363			
<b>TOTAL CONSTRUCTION AREA</b>		<b>63,466</b>		

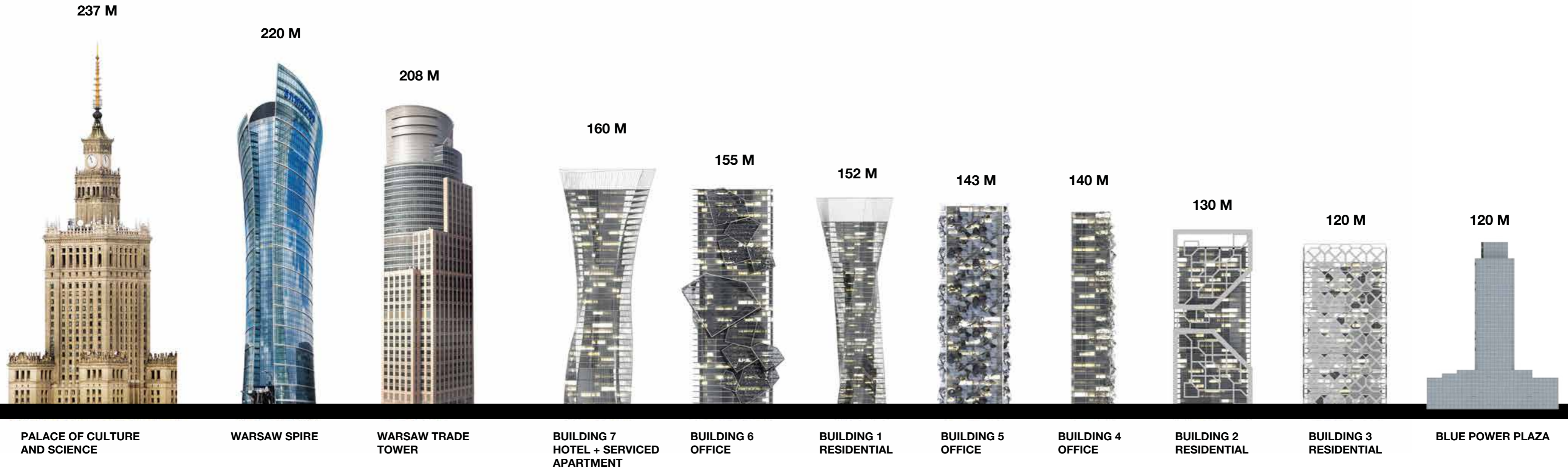


PLOT B SITE AREA		33,550		
BUILDING	AREA per Floor(m2)	AREA per Building(m <sup>2</sup> )	FLOOR per Building	BUILDING Height (m.)
BUILDING 1 RESIDENTIAL	980	37,240	38	152
BUILDING 2 RESIDENTIAL	749	24,343	33	130
BUILDING 3 RESIDENTIAL	864	25,920	30	120
BUILDING 4 OFFICE	560	19,600	35	140
BUILDING 5 OFFICE	800	28,600	36	143
BUILDING 6 OFFICE	1,268	49,135	39	155
BUILDING 7 HOTEL + SERVICED APARTMENT	1,382	55,280	40	160
BUILDING 8 RETAIL	3,500	10,500	3	18
PARKING AREA		100,650		
TOTAL NUMBER OF CARS	2,876			
<b>TOTAL CONSTRUCTION AREA</b>		<b>250,618</b>		

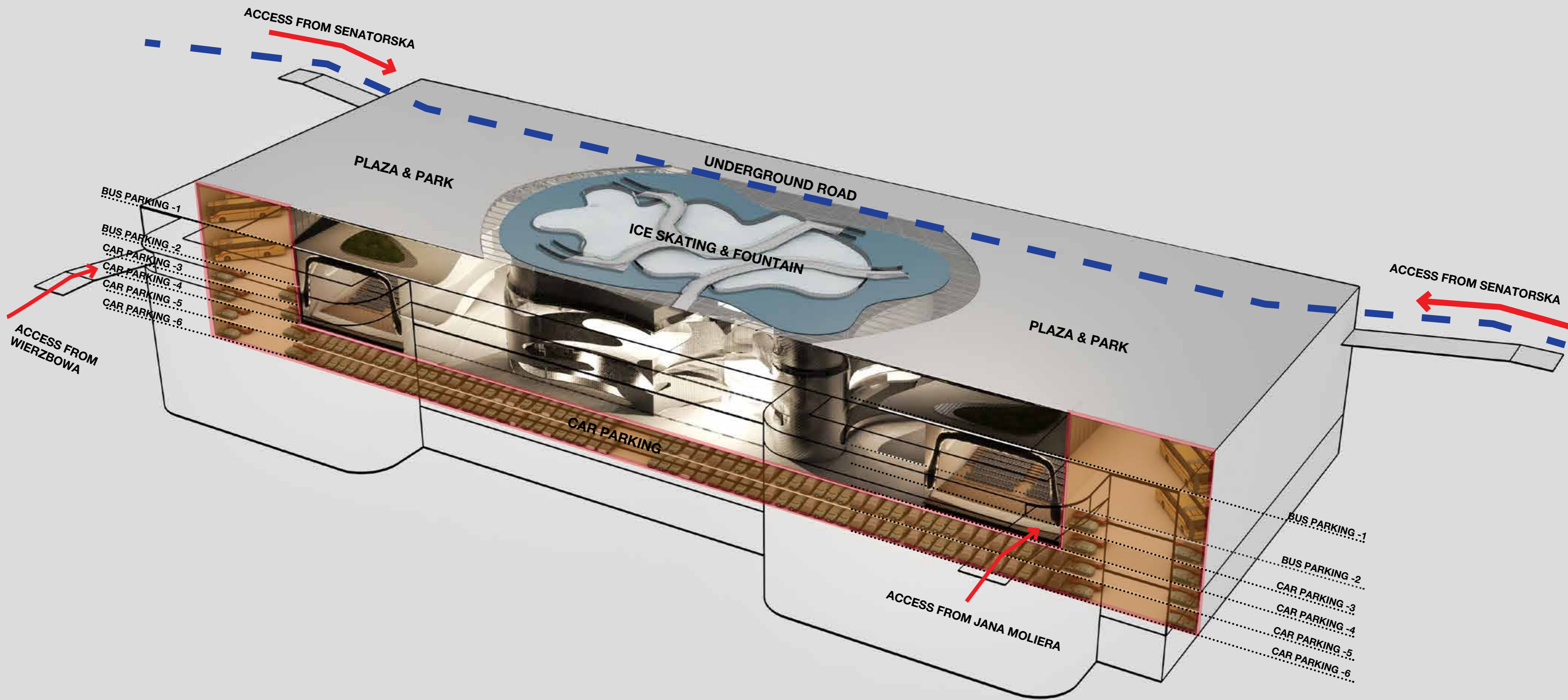




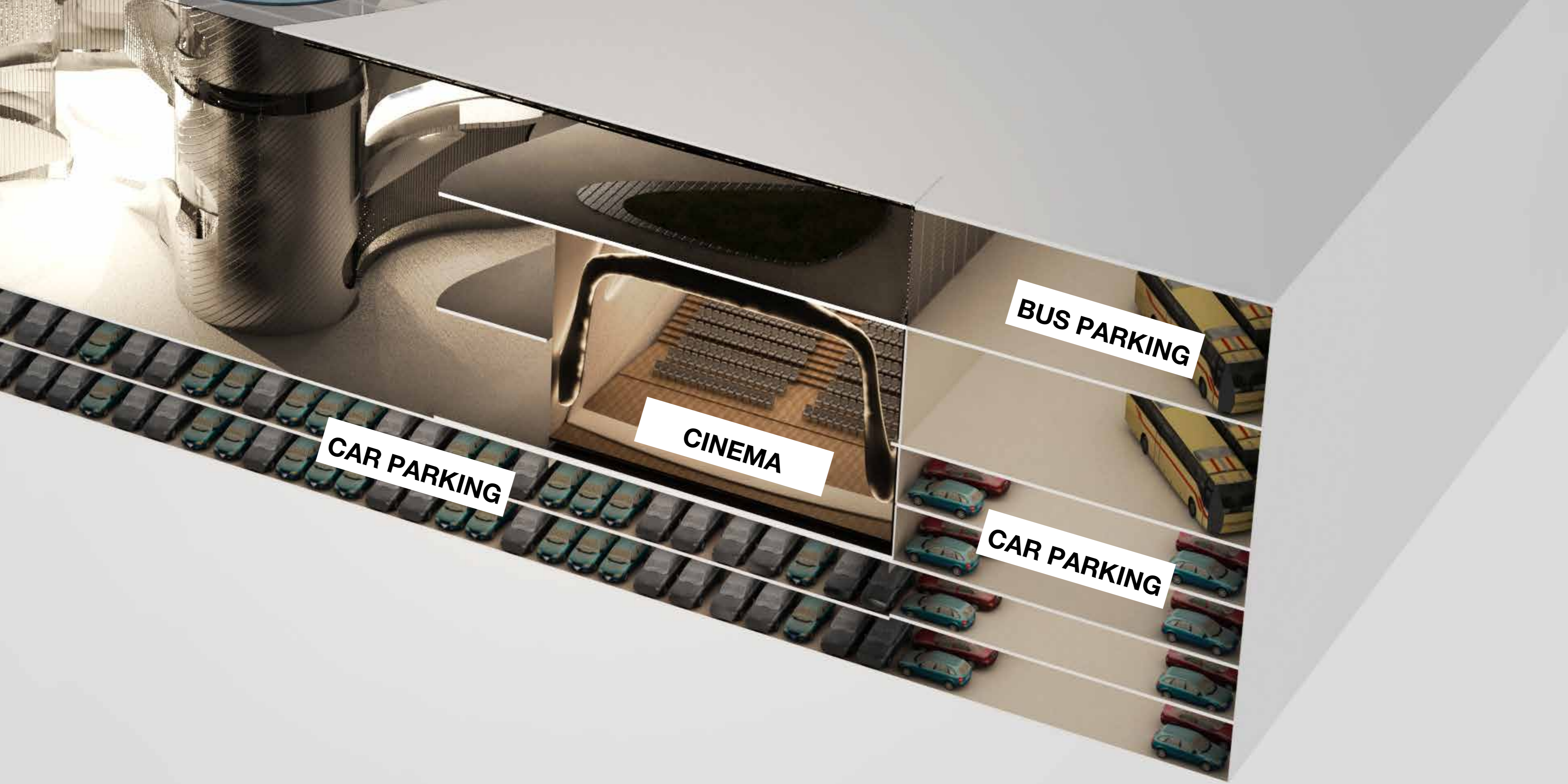












**CAR PARKING**

**CINEMA**

**BUS PARKING**

**CAR PARKING**







The image depicts a vast, multi-level atrium with a striking, futuristic ceiling. The ceiling is composed of a dense grid of metallic beams, with several large, curved, white structural elements that resemble stylized, flowing ribbons or light fixtures. These elements curve downwards, creating a sense of dynamic movement and depth. The space is filled with light, likely from a large skylight above, which illuminates the various levels. In the foreground, a glass railing separates the viewer from a lower level where clothing racks and mannequins are visible, indicating a retail environment. The overall atmosphere is one of modern, high-tech architecture.

**SKYLIGHT**

**UNDERGROUND RETIAL**









**PARKING**

**PARKING**

**UNDERGROUND RETIAL**







The image depicts a vast, multi-level underground retail space. The architecture is characterized by a complex, grid-like structure of dark metal beams and glass railings. A large, rectangular skylight at the top allows natural light to illuminate the interior. The space is divided into multiple levels, with a prominent curved walkway on the right side. In the foreground, there is a circular area with green grass and several white armchairs, suggesting a lounge or seating area. The overall atmosphere is modern and sophisticated, with a focus on clean lines and high-quality materials.

**SKYLIGHT**

**PARKING**

**UNDERGROUND RETIAL**



UNDERGROUND CINEMA INTERIORS





UNDERGROUND CINEMA INTERIORS





UNDERGROUND CINEMA INTERIORS





UNDERGROUND CINEMA INTERIORS

















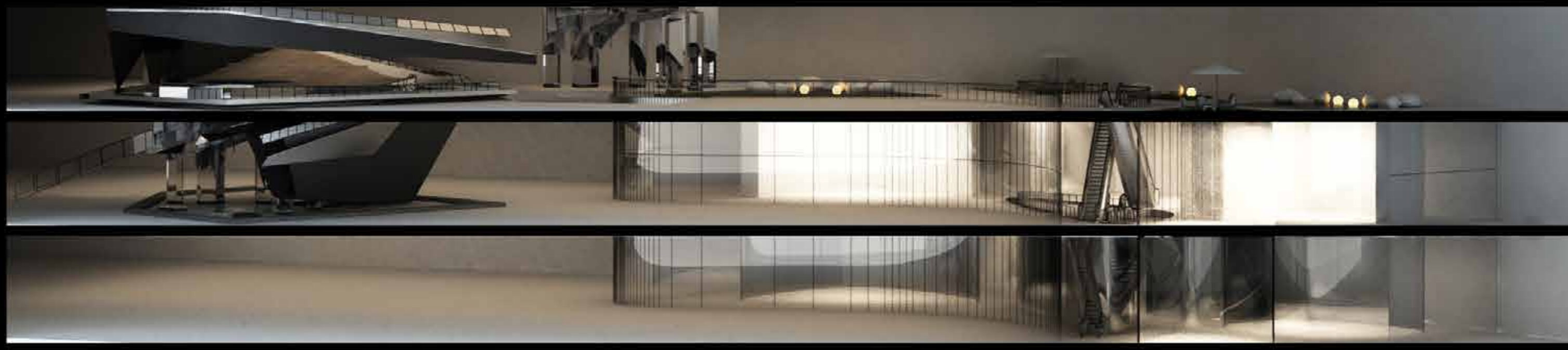


Opera Center Building

Diamond Courtyard



Fashion Avenue

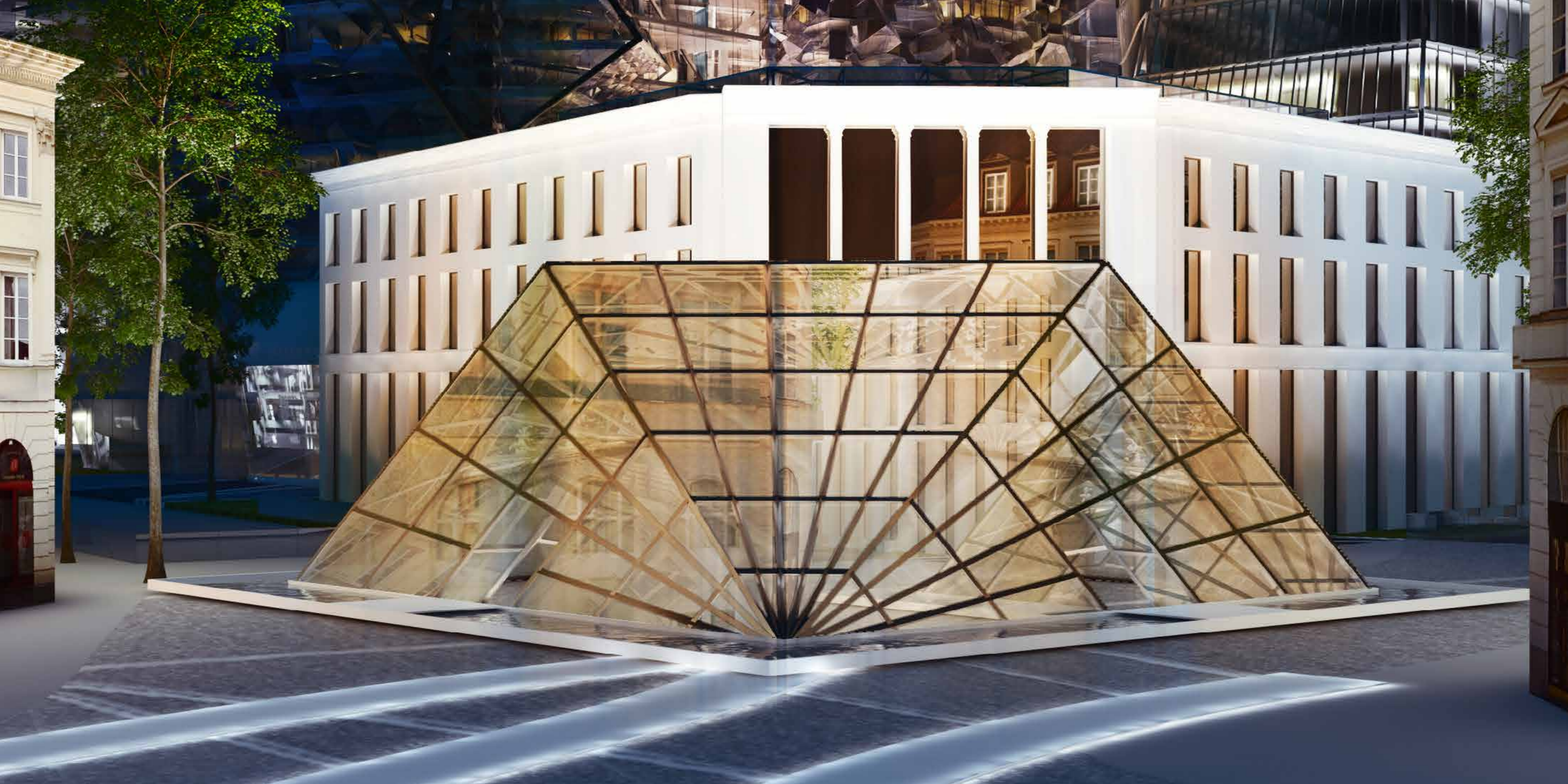


Diamond Plaza



Shopping Mall





























F. CHOPIN

N:  
s Music

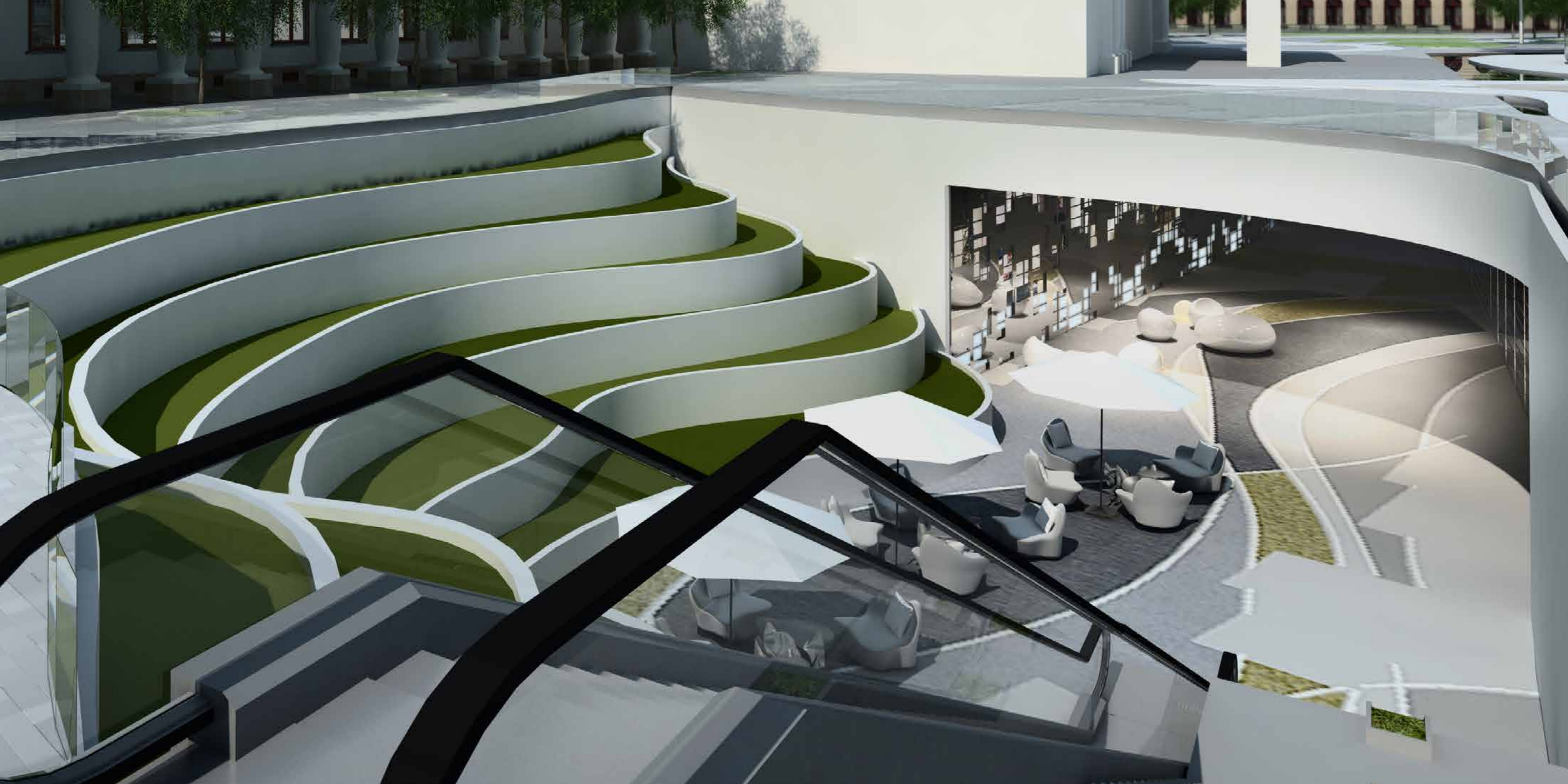
















F. CHOPIN

N:  
s Music





F. CHOPIN

N:  
s Music



**Adam Mickiewicz**



was a Polish poet, dramatist, essayist, publicist, translator, professor of Slavic literature, and political activist. He is regarded as national poet in Poland, Lithuania and Belarus. A principal figure in Polish Romanticism, he is counted one of Poland's "Three Bards" ("Trzej Wieszczowie") and is widely regarded as Poland's greatest poet.

**Tadeusz Kosciuszko**



was a Polish-Lithuanian military engineer and a military leader who became a national hero in Poland, Lithuania, Belarus, and the United States. He fought in the Polish-Lithuanian Commonwealth's struggles against Russia and Prussia, and on the American side in the American Revolutionary War.

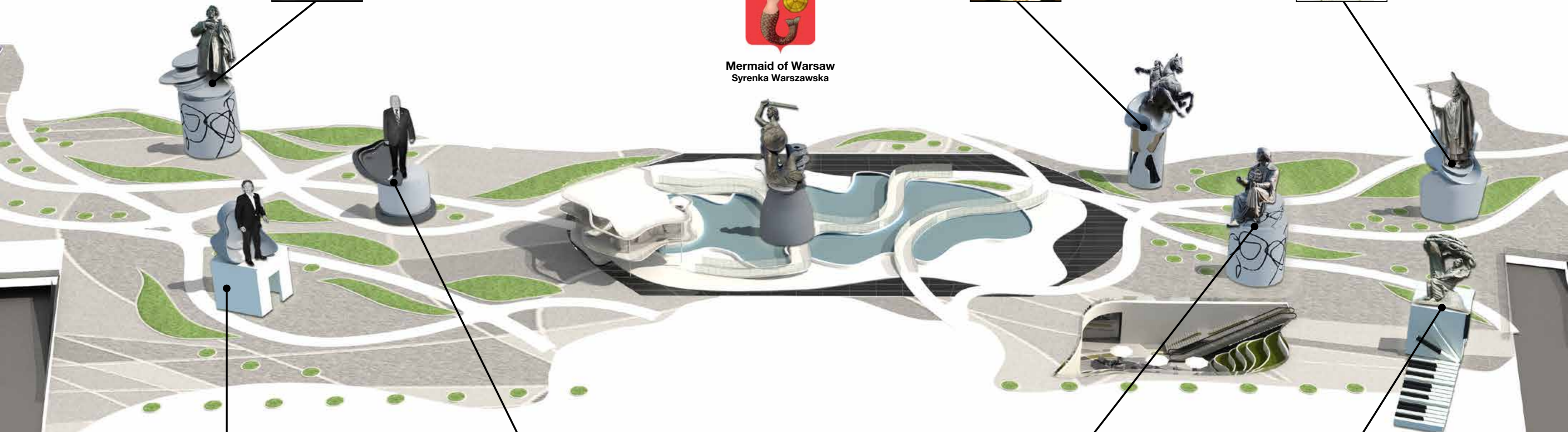
**Pope John Paul II**



was Pope from 1978 to 2005. He is widely known to Catholics as Saint John Paul the Great, especially in the names of institutions. He was elected by the second Papal conclave of 1978, which was called after Pope John Paul I, who had been elected in August after the death of Pope Paul VI, died after thirty-three days.



**Mermaid of Warsaw**  
Syrenka Warszawska



**Roman Polanski**

known professionally as Roman Polanski, is a French-Polish film director, producer, writer, and actor. From Paris, his Polish-Jewish parents moved the family back to Poland in 1937, when he was four. Poland was invaded by Nazi Germany a few years later, in 1939, and Polanski spent the next six years of his childhood mostly on his own, trying to survive the ongoing Holocaust.



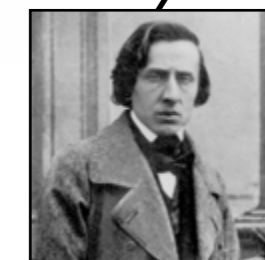
**Lech Walesa**

is a retired Polish politician and labor activist. He co-founded and headed Solidarity (Solidarność), the Soviet bloc's first independent trade union, won the Nobel Peace Prize in 1983, and served as President of Poland from 1990 to 1995.



**Nicolaus Copernicus**

was a Renaissance mathematician and astronomer who formulated a model of the universe that placed the Sun rather than the Earth at the center of the universe, likely independently of Aristarchus of Samos, who had formulated such a model some eighteen centuries earlier.



**Frédéric Chopin**

was a Polish composer and virtuoso pianist of the Romantic era who wrote primarily for the solo piano. He gained and has maintained renown worldwide as a leading musician of his era, whose "poetic genius was based on a professional technique that was without equal in his generation." Chopin was born in what was then the Duchy of Warsaw and grew up in Warsaw























